



water affairs

Department:
Water Affairs
REPUBLIC OF SOUTH AFRICA

Development of Reconciliation Strategies for Large Bulk Water Supply Systems of the Luvuvhu and Letaba Water Supply System

Study Steering Committee Meeting No 4
21 November 2013

Water use: Irrigation and afforestation (Item 8.2)

WATER IS LIFE - RESPECT IT, CONSERVE IT, ENJOY IT.

1

Outline of Presentation

- **Summary of processes**
- **Identification of irrigation**
- **Identification of forestry**
- **Calculation of theoretical irrigation demands**
- **Selected results**

2

WATER IS LIFE - RESPECT IT, CONSERVE IT, ENJOY IT.

Summary of process - Irrigation

- Identify irrigated fields : 1998 & now
- For each field, establish:
 - *Extent*
 - *Crop under irrigation*
 - *Irrigation system*
 - *Water source(s)*
- Calculate crop water requirements
- Generate representative crop for each modeling unit

3

WATER IS LIFE - RESPECT IT, CONSERVE IT, ENJOY IT.

Summary of process - Forestry

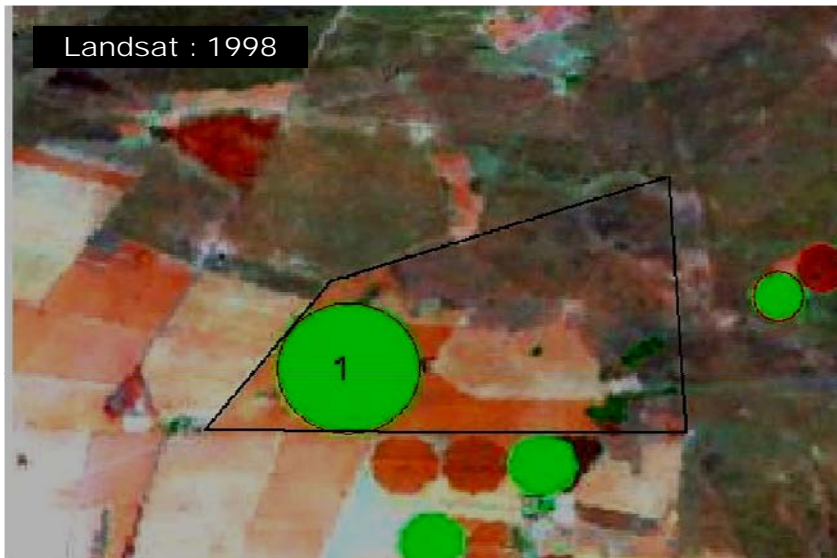
- Identify forestry areas : 1998 & now
- For each area, establish:
 - *Extent*
 - *Specie*

4

WATER IS LIFE - RESPECT IT, CONSERVE IT, ENJOY IT.

Identification of land use - 1

Landsat : 1998

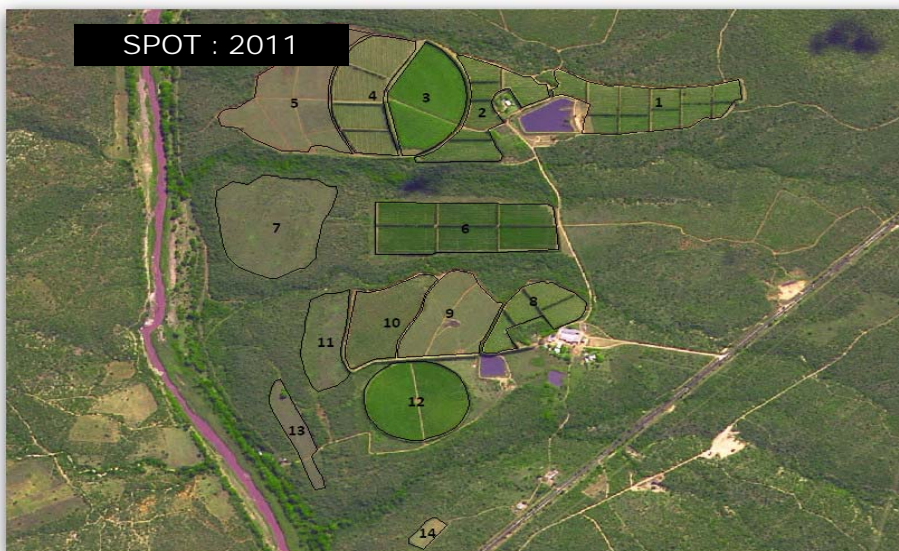


5

WATER IS LIFE - RESPECT IT, CONSERVE IT, ENJOY IT.

Identification of land use - 2

SPOT : 2011



6

WATER IS LIFE - RESPECT IT, CONSERVE IT, ENJOY IT.

Identification of land use - 3



7

WATER IS LIFE - RESPECT IT, CONSERVE IT, ENJOY IT.

Identification of land use - 4

- All fields were manually digitised
- Extent electronically calculated (GIS)
- Attributes (*crop, irr. system, source, specie*) captured for each field using data from
 - *Previous field survey studies*
 - *Water use registration info (WARMS)*
 - *Validation/Verification study*
- Results summarised per modeling area

8

WATER IS LIFE - RESPECT IT, CONSERVE IT, ENJOY IT.

Calculation of crop water requirements

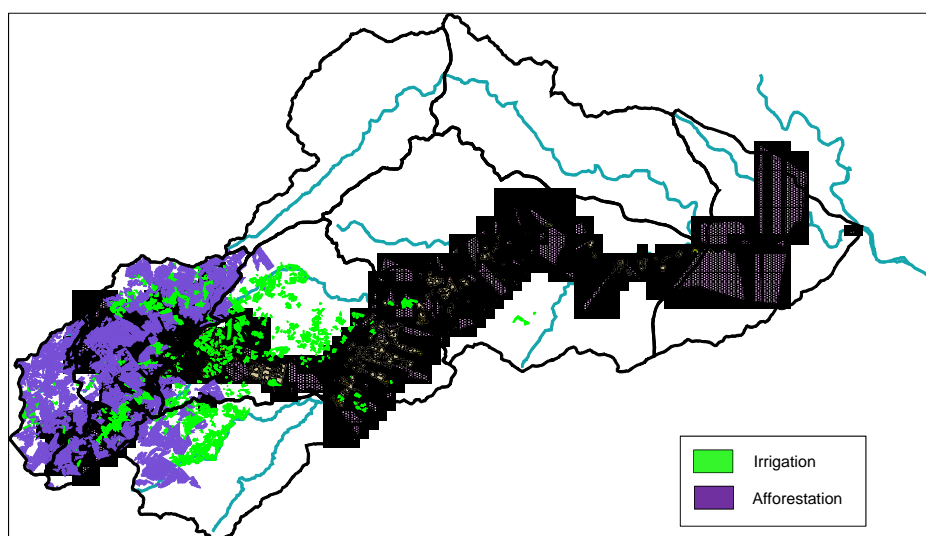
- By using SAPWAT, theoretical crop irrigation requirements were determined for each quaternary drainage region.
- Above was done to facilitate the definition of a representative crop that mimics the effect of all the crops and irrigations systems within a particular quaternary catchment (unit).

9

WATER IS LIFE - RESPECT IT, CONSERVE IT, ENJOY IT.

Results

Identified irrigation and afforestation – Great Letaba Catchment

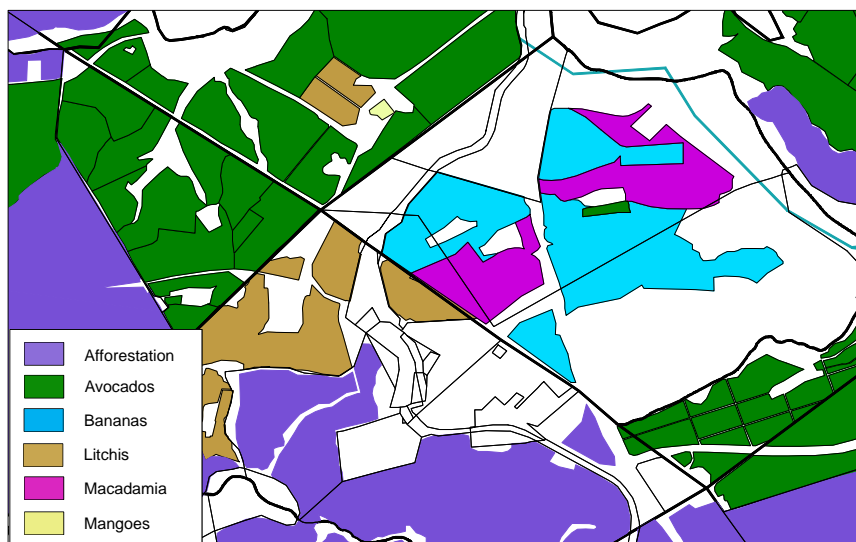


10

WATER IS LIFE - RESPECT IT, CONSERVE IT, ENJOY IT.

Results

Identified irrigation and afforestation – Zoomed view



11

WATER IS LIFE - RESPECT IT, CONSERVE IT, ENJOY IT.

Results

Irrigation summary : Great Letaba River Catchment

Crop	Drainage Region									Total (ha)
	Above dam (ha)		Below dam (ha)							
	B81A	B81B	B81C	B81D	B81E	B81F	B81G	B81H	B81J	
Avocado	112	3 671	1 007	487	210	0	0	0	0	5 487
Bananas	0	181	574	529	45	0	9	0	0	1 339
Citrus	6	2	1 985	460	4 744	3 136	0	2	51	10 385
Litchi	0	268	198	87	165	28	0	0	0	746
Mango	0	119	733	1 010	1 980	1 114	27	2	35	5 019
Nuts	9	384	110	145	119	0	0	0	0	766
Vegetables (S)	92	13	127	352	579	647	166	97	227	2 300
Vegetables (W)	135	20	141	352	532	661	166	124	227	2 357
Other	122	1 314	135	276	370	121	402	22	0	2 762
Total	475	5 971	5 009	3 697	8 744	5 708	770	246	539	31 160

12

WATER IS LIFE - RESPECT IT, CONSERVE IT, ENJOY IT.

Results

Afforestation areas : Great Letaba River Catchment

Specie	Drainage Region						Total (ha)
	Above dam (ha)		Below dam (ha)				
	B81A	B81B	B81C	B81D	B81E	B81G	
Eucalyptus	1 693	16 697	1 115	4 608	1 174	49	25 336
Pine	8 089	1 587	0	485	0	0	10 161
Total	9 782	18 284	1 115	5 093	1 174	49	35 497

Summaries of irrigation areas (including source and representative crop values) and areas of afforestation were provided to modeling team for further analysis and inclusion in models.

13

WATER IS LIFE - RESPECT IT, CONSERVE IT, ENJOY IT.

Thank You

14

WATER IS LIFE - RESPECT IT, CONSERVE IT, ENJOY IT.